

P	LTR	DESCRIPTION	DATE	DWN	APVD
	4	REVISED DRAWING	15SEP2020	FD	PO
	A	ECR-21-001958	02MAR2021	SR	FD
	B	REVISED PER ECR-21-108141	20JUL2021	SM	FD
	BI	ECR-21-115785	29SEP2021	RK	FD

NOTES:

# DIMENSIONS BEFORE APPLICATION

1 MATERIALS:  
 CONTACT : COPPER ALLOY, TIN PLATED  
 HOUSING: PPE+PS; COLOR: DARK GREY  
 BUTTON: PPE+PS; COLOR: DARK GREY

2. APPLICABLE CABLES:

A) APPROVED ACCORDING UL FILE E13288 FOR SOLAR CABLES FROM 5.5 mm TO 7.2 mm

B) UNDER APPROVAL BY IEC62852 FOR FOLLOWING CABLE TYPES FROM DEFINED MANUFACTURERS:

- TE CABLE PN 2328394, 2.5 mm<sup>2</sup> (14 AWG)
- TE CABLE PN 2270245, 4 mm<sup>2</sup> (12 AWG)
- TE CABLE PN 2270260, 4 mm<sup>2</sup> (12 AWG)
- TE CABLE PN 2328400, 6 mm<sup>2</sup> (10 AWG)
- TE CABLE PN 2270215, 4 mm<sup>2</sup> (12 AWG)
- TE CABLE PN 2270259, 4 mm<sup>2</sup> (12 AWG)

BYSON 6351D 2.5mm<sup>2</sup>/14AWG

BYSON 6352D 4mm<sup>2</sup>/12AWG

BYSON 6353D 6mm<sup>2</sup>/10AWG

HONGLIN DPN4012A20 4mm<sup>2</sup>/12AWG

3 MOULDING PRODUCTION DATE MARKING

4 AREA FOR LASER PRINT DATA MATRIX AND PARTNUMBER

- PPPPPPPPVYYWDFL#####  
 - P P P P P P P P = PART NUMBER  
 - V = VERSION CUSTOMER DRAWING  
 - Y Y = LAST TWO DIGITS OF YEAR 19  
 - W W = WEEK NUMBER  
 - D = WEEKDAY (1 MONDAY)  
 - F = FACTORY CODE (S = SZCZECIN, T = TRUTNOV)  
 - L = MANUFACTURING LINE (M=MANUAL, A=AUTOMATIC)  
 - ##### = SERIAL NUMBER (PRODUCTION PER DAY)

5 CABLE FOR REFERENCE ONLY

6 NOTE REMOVED

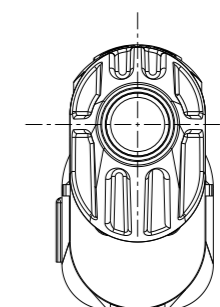
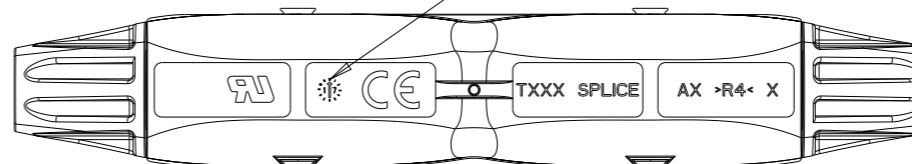
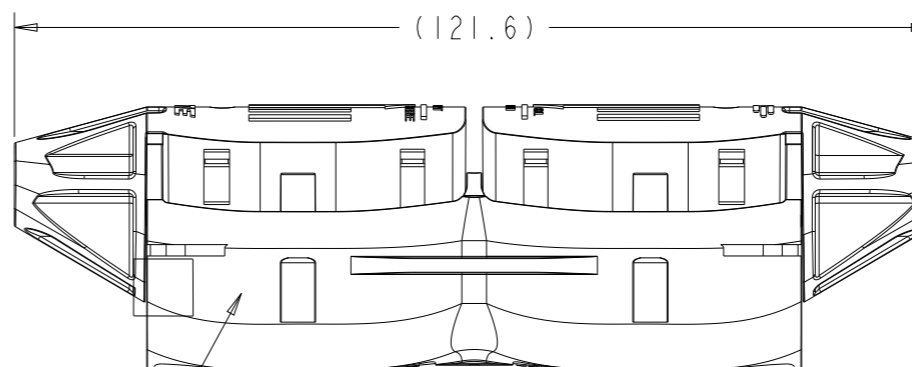
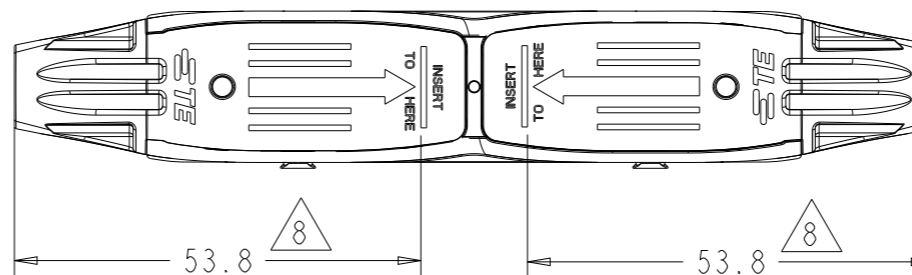
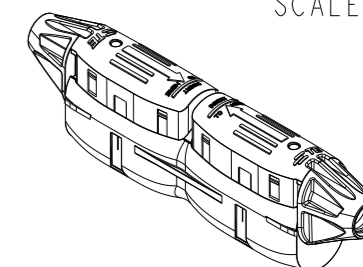
7 WHEN BUTTON AND HOUSING RIBS ARE ALIGNED, THE CONNECTOR IS CORRECTLY TERMINATED

8 MINIMUM CABLE INSERTION LENGTH 53.8 mm ± 2 mm


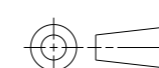
9. CHECK APPLICATION SPEC 114-133104 FOR PROPER CABLE CONNECTION

10. FOR PACKAGING FORMAT AND QUANTITY SEE 107-133104.

SCALE 1:2



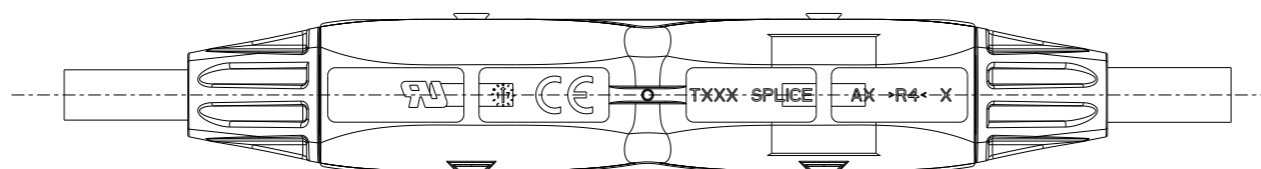
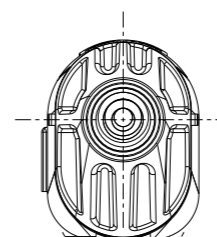
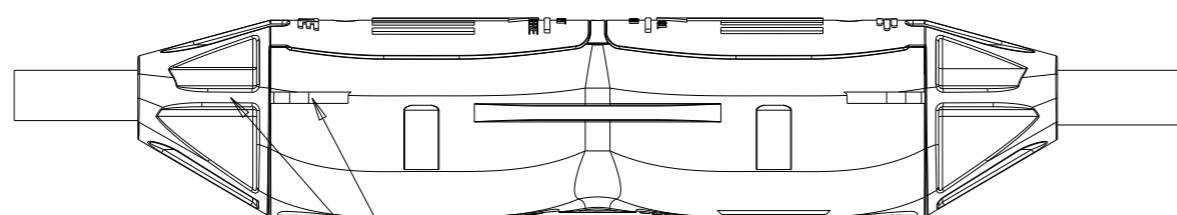
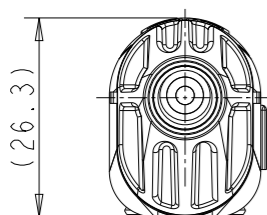
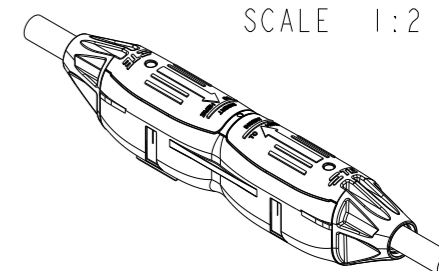
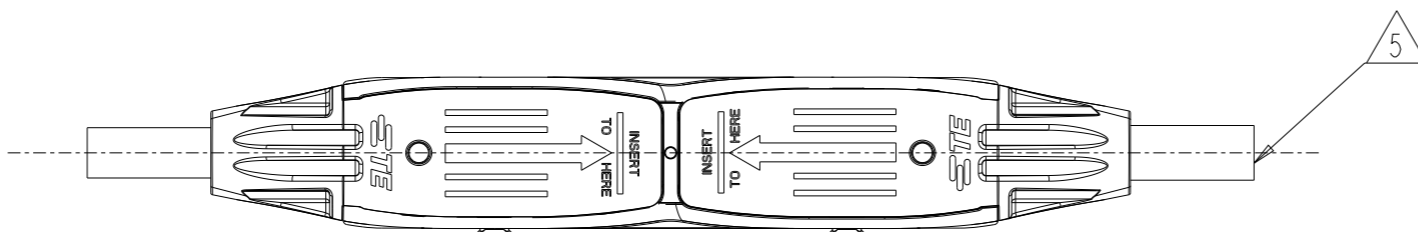
P/N 2336077-1 AS SHOWN  
MODEL CODE: SLK-ID-1-BL-XX

THIS DRAWING IS A CONTROLLED DOCUMENT.		DWN	29JUN2018		 TE Connectivity
		CHK	29JUN2018		
		APVD	29JUN2018		
		PRODUCT SPEC	108-133104		
DIMENSIONS:		TOLERANCES UNLESS OTHERWISE SPECIFIED:		NAME	
mm				SOLARLOK 2.0 - SPLICE	
		0 PLC ±0.4 1 PLC ±0.3 2 PLC ± 3 PLC ± 4 PLC ± ANGLES ± FINISH -		APPLICATION SPEC	
MATERIAL				114-133104	
		WEIGHT		48.4 gr	
		CUSTOMER DRAWING		SCALE 1:1	
		SIZE		A3	
		CAGE CODE		00779	
		DRAWING NO		C-2336077	
		RESTRICTED TO		-	
		SHEET		1 OF 3	
		REV		BI	

P	LTR	DESCRIPTION	DATE	DWN	APVD
-	-	SEE SHEET 1	-	-	-

# DIMENSIONS AFTER APPLICATION

SCALE 1:2



THIS DRAWING IS A CONTROLLED DOCUMENT.

DIMENSIONS: mm	TOLERANCES UNLESS OTHERWISE SPECIFIED:
	0 PLC ±0.4
	1 PLC ±0.3
	2 PLC ±-
	3 PLC ±-
	4 PLC ±-
	ANGLES ±-
MATERIAL	FINISH
	-

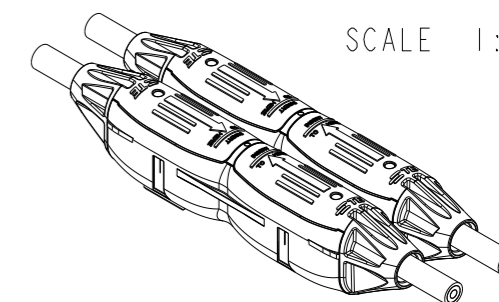
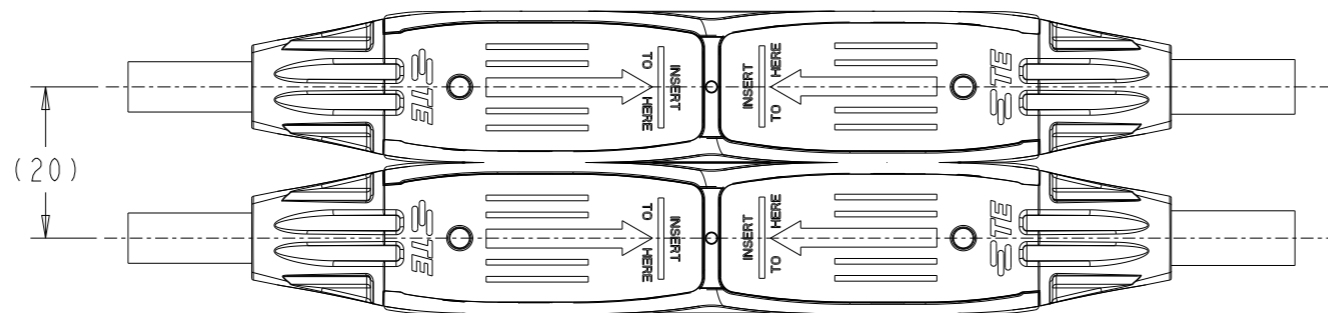
DWN	29JUN2018
GANESH C M	
CHK	29JUN2018
D FREDDY	
APVD	29JUN2018
D FREDDY	
PRODUCT SPEC	108-133104
APPLICATION SPEC	114-133104
WEIGHT	48.4 gr
CUSTOMER DRAWING	

		TE Connectivity	
		NAME SOLARLOK 2.0 - SPLICE	
SIZE	CAGE CODE	DRAWING NO	RESTRICTED TO
A3	00779	C-2336077	-
SCALE 5:1		SHEET 2 OF 3	REV B1

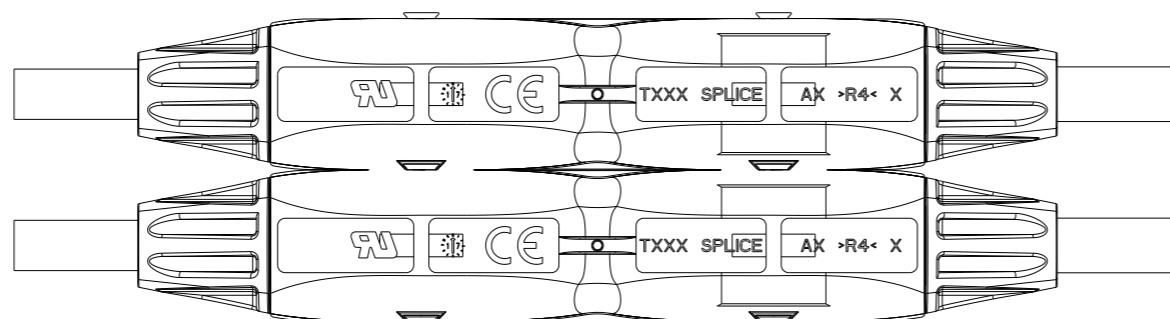
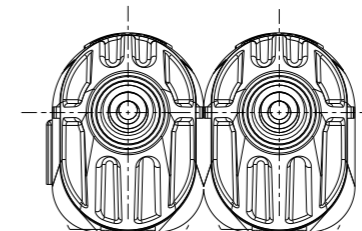
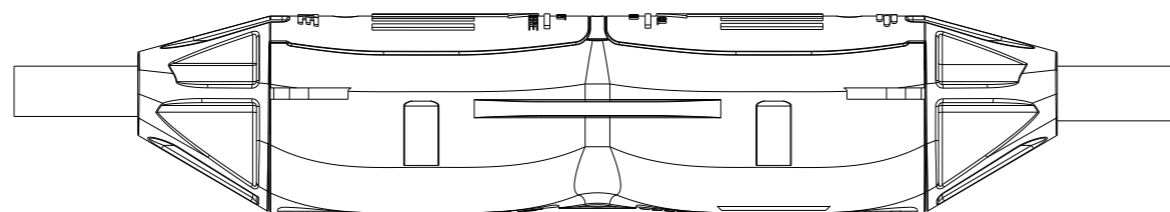
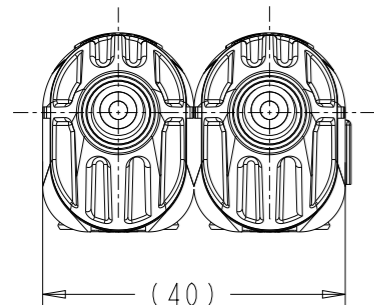
REVISIONS

P	LTR	DESCRIPTION	DATE	DWN	APVD
-	-	SEE SHEET 1	-	-	-

DIMENSIONS AFTER STACKING

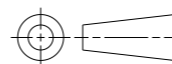


SCALE 1:2



THIS DRAWING IS A CONTROLLED DOCUMENT.

DIMENSIONS:  
mm



MATERIAL



TOLERANCES UNLESS OTHERWISE SPECIFIED:

- 0 PLC ±0.4
- 1 PLC ±0.3
- 2 PLC ±-
- 3 PLC ±-
- 4 PLC ±-
- ANGLES ±-
- FINISH -

DWN 29JUN2018

GANESH C M

CHK 29JUN2018

D FREDDY

APVD 29JUN2018

D FREDDY

PRODUCT SPEC

108-133104

APPLICATION SPEC

114-133104

WEIGHT

48.4 gr

CUSTOMER DRAWING



TE Connectivity

NAME SOLARLOK 2.0 - SPLICE

-

-

SIZE CAGE CODE DRAWING NO RESTRICTED TO

A3 00779 C-2336077 -

SCALE 1:1 SHEET 3 OF 3 REV B1