



C_GelWrapSC_lv

GelWrap Splice Closures

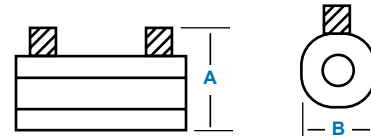
Water Resistant Wraparound Splice Closures (1000 V)

Raychem GelWrap splice closures quickly and conveniently insulate and seal buried electrical connections rated up to 1000 volts. The robust, yet compact, design is engineered to handle the harsh environments of direct burial and manhole applications. GelWrap splice closures are equally well suited for insulation and jacket repair. GelWrap UF splices include the UF connector.

Selection Information: dimensions in inches (millimeters)

| Catalog Number | Sleeve Length | Conductor Size | Connector Opening | Max. General Use Diameter Range | Std. Pack |
|---------------------------|---------------|-------------------|-------------------|---------------------------------|-----------|
| GelWrap-18/4-100 | 4.0 (100) | #12-4/0 (4-95) | 1.0 (25) | 0.15-0.70 (4-18) | 6 |
| GelWrap-18/4-150 | 6.0 (150) | #12-4/0 (4-95) | 3.0 (75) | 0.15-0.70 (4-18) | 6 |
| GelWrap-18/4-200 | 8.0 (200) | #12-4/0 (4-95) | 5.0 (125) | 0.15-0.70 (4-18) | 6 |
| GelWrap-18/4-250 | 10.0 (250) | #12-4/0 (4-95) | 7.0 (175) | 0.15-0.70 (4-18) | 6 |
| GelWrap-18/4-300 | 12.0 (300) | #12-4/0 (4-95) | 9.0 (225) | 0.15-0.70 (4-18) | 6 |
| GelWrap-33/10-150 | 6.0 (150) | #2-500 (35-240) | 2.0 (50) | 0.40-1.30 (10-33) | 6 |
| GelWrap-33/10-200 | 8.0 (200) | #2-500 (35-240) | 4.0 (100) | 0.40-1.30 (10-33) | 6 |
| GelWrap-33/10-250 | 10.0 (250) | #2-500 (35-240) | 6.0 (150) | 0.40-1.30 (10-33) | 6 |
| GelWrap-33/10-250-I350M4* | 10.0 (250) | #6-350 (16-180) | 5 (125) | 0.40-1.30 (10-33) | 12 |
| GelWrap-33/10-300 | 12.0 (300) | #2-500 (35-240) | 8.0 (200) | 0.40-1.30 (10-33) | 12 |
| GelWrap-33/10-350 | 14.0 (350) | #2-500 (35-240) | 10.0 (250) | 0.40-1.30 (10-33) | 10 |
| GelWrap-50/20-200 | 8.0 (200) | 250-750 | 2.0 (50) | 0.80-1.50 (20-38) | 12 |
| GelWrap-50/20-250 | 10.0 (250) | 250-750 | 4.0 (100) | 0.80-1.50 (20-38) | 12 |
| GelWrap-50/20-300 | 12.0 (300) | 250-750 | 6.0 (150) | 0.80-1.50 (20-38) | 12 |
| GelWrap-50/20-350 | 14.0 (350) | 250-750 | 8.0 (200) | 0.80-1.50 (20-38) | 12 |
| GelWrap-50/20-400 | 16.0 (400) | 250-750 | 10.0 (250) | 0.80-1.50 (20-38) | 12 |
| GelWrap-UF-200 | 8.0 (200) | 14/2-8/3 w/ground | N/A | N/A | 10 |

Notes: UL denotes UL & cUL for submersible applications
 For other sizes or applications, a minimum seal length is required on each side of connector opening or jacket damage.
 GelWrap closure 18/4 series 1.5 (38)
 GelWrap closure 33/10 series 2.0 (51)
 GelWrap closure 50/20 series 3.0 (75)
 *Includes four screw mechanical connector



UL Listed

| Catalog Number | Sleeve Length | 1000V Cable Range | Maximum Connector Opening | Maximum Compression Connector Dia. | Maximum Mechanical Connector Dimensions Height* (A) | Width (B) |
|--------------------|---------------|-------------------|---------------------------|------------------------------------|---|-----------|
| GelWrap-18/4-150UL | 6.0 (150) | #14-4/0 AWG | 2.0 (50) | 0.85 (22) | 1.2 (30) | 1.1 (28) |
| GelWrap-18/4-200UL | 8.0 (200) | #14-4/0 AWG | 4.0 (100) | 0.85 (22) | 1.2 (30) | 1.1 (28) |
| GelWrap-18/4-250UL | 10.0 (250) | #14-4/0 AWG | 6.0 (150) | 0.85 (22) | 1.2 (30) | 1.1 (28) |
| GelWrap-18/4-300UL | 12.0 (300) | #14-4/0 AWG | 8.0 (200) | 0.85 (22) | 1.2 (30) | 1.1 (28) |
| GelWrap-18/4-350UL | 14.0 (350) | #14-4/0 AWG | 10.0 (250) | 0.85 (22) | 1.2 (30) | 1.1 (28) |
| GelWrap-18/4-400UL | 16.0 (400) | #14-4/0 AWG | 12.0 (300) | 0.85 (22) | 1.2 (30) | 1.1 (28) |
| GelWrap-18/4-450UL | 18.0 (450) | #14-4/0 AWG | 14.0 (350) | 0.85 (22) | 1.2 (30) | 1.1 (28) |
| GelWrap-18/4-500UL | 20.0 (500) | #14-4/0 AWG | 16.0 (400) | 0.85 (22) | 1.2 (30) | 1.1 (28) |
| GelWrap-18/4-550UL | 22.0 (550) | #14-4/0 AWG | 18.0 (450) | 0.85 (22) | 1.2 (30) | 1.1 (28) |
| GelWrap-18/4-600UL | 24.0 (600) | #14-4/0 AWG | 20.0 (500) | 0.85 (22) | 1.2 (30) | 1.1 (28) |
| GelWrap-UF-250UL | 10.0 (250) | 14/2-8/3 w/ground | N/A | N/A | N/A | N/A |

*Height includes screws with cable installed.

Product Performance

| Testing | Test Conditions |
|---------------------|--|
| ANSI C119.1 | 600 V insulated underground |
| Chemical Resistance | Fluid immersion, 168 hours @ 23°C, 75% elongation retention minimum - 10W-40 motor oil - 10% hydrochloric acid - 15% sodium chloride - 20% sodium hydroxide - ETX 60280 antifreeze (1000 hours) |
| Accelerated Aging | 1000 hours @ 135°C - 93% retention tensile strength - 82% retention elongation at break |

Ordering Information

- Selection is based on typical dimensions for low-voltage insulated cables.
- Related test reports: EDR-5343-18/4, EDR-5356-33/10, EDR-5367 for 50/20, EDR-5356 for GelWrap-33/10-250-I350M4 (A four screw connector is included). EDR-5356-GelWrap-UF

For connector information refer to the Connectors and Terminals section of this catalog.